



The Premium Series Madrid 44 Spa



Patented DURA-LAST™
Cabinet/Base System!
• Dual-Walled Insulation
• Lifetime Warranty!



Foldaway Integrated Steps and Towel Holder

Jets: 44 Stainless Steel Two-Tone Swirl Massage Jets
Seats: 5-6 including Lounger
Dimensions: 91 x 91 x 36 in. / 231 x 231 x 91.4 cm.
Volume: 400 US Gallons / 1514 Litres
Voltage: 240V
Pump(s): 1 x 5BHP 2-spd + 1 x 5BHP 1-spd
Heater: 4KW Stainless Steel All-Weather Heater
Insulation: Foam injected within dual-wall construction

Features:

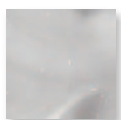
- Neck/Shoulder Jets
- Foldaway Steps & Towel Holder Feature
- 'S' LED Lighted Controls + 5" Underwater LED
- Large, Molded Backlit LED Waterfall
- DURA-LAST™ Patented Dual-Walled Cabinet/Base
- Ozonator

Optional:

- Dura-Shield™ HardCover with UltraStrong CoverLift Assist
- Acrylic Shell color upgrade



Standard Acrylic Shell Color

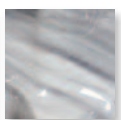


Sterling Silver

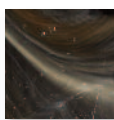
Optional Acrylic Shell Color Upgrades



Mediterranean Tuscan



Storm Clouds



Midnight Canyon

Premium Series ShadowRock Cabinet Colors



Cobblestone



Gray Granite



Millstone


STRONG SPAS
 Spa Performance™

1-800-STRONG-9 (1-800-787-6649) strongspas.com